



**University  
Hospitals Sussex**  
NHS Foundation Trust

# Cyclopentolate Hydrochloride drops for glasses tests

Orthoptic Department  
St Richard's Hospital  
Southlands Hospital

**Patient information**

## Instructions for patients

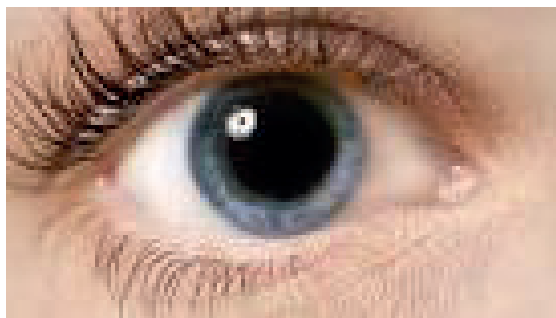
Convergence insufficiency is a condition where a person is unable to converge their eyes effectively; i.e. move both eyes towards the nose at the same time. Convergence is needed to keep both eyes focussed on near objects; e.g. reading a book. If convergence insufficiency causes symptoms it can be treated with exercises.

- Wash your hands.
- Remove the single dose dropper from the packet by pulling back the paper and then pull off the cap.
- Gently pull down the lower lid.
- Squeeze the dropper and put ONE drop in EACH EYE.
- Do this 45 minutes before the appointment time at the optician.



If you are unable to instill the drops, please arrive at the opticians about 45 minutes early for them to instill them there.

Whilst the drops take effect your child may complain of blurred vision and be a little uncomfortable in bright light or sunshine. This is normal and these side effects can last up to 24 hours.



If your child experiences any other side effects, please telephone the Orthoptic department:

**St Richard's 01243 831499**

**Southlands 01273 446077**

Ref. number: 2217 WSXEYEPIL  
Publication date: 03/2022  
Review date: 03/2024

© University Hospitals Sussex NHS Foundation Trust Disclaimer:  
The information in this leaflet is for guidance purposes only and is in no way  
intended to replace professional clinical advice by a qualified practitioner.

