



University Hospitals Sussex  
NHS Foundation Trust

# Hospital Liaison Group

Thursday 27<sup>th</sup> November 2025

Start: 18:00

**Terece Walters**

Hospital Nurse Director, RSCH

**Jonathan Steele**

Strategic Capital Programme Manager

**Part One:**

18:00	Hospital Director Welcome & Introductions	Terece Walters
18:00	Chair's Opening Remarks	Cllr Williams
18:05	Minutes of the Previous Meeting	Cllr Williams
18:10	"You Said, We Did"	Terece Walters
18:15	Residents Questions on Part 1	Terece Walters

**Part Two:**

18:30	Look Forward	Jonathan Steele
18:40	Residents Questions on Part 2	Jonathan Steele
18:55	Any Other Business	Cllr Williams
19:00	Date of Next Meeting (5 <sup>th</sup> June 2025)	Cllr Williams

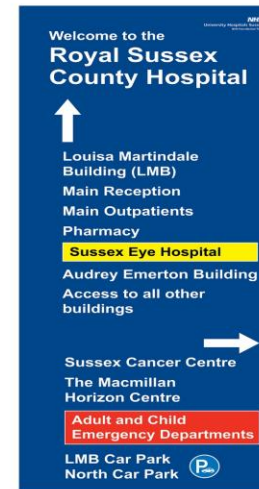
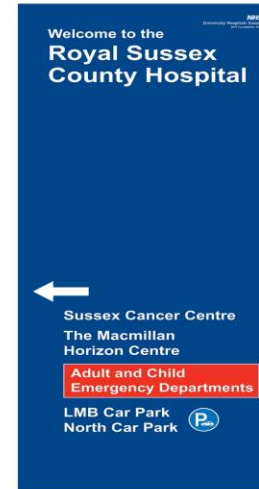
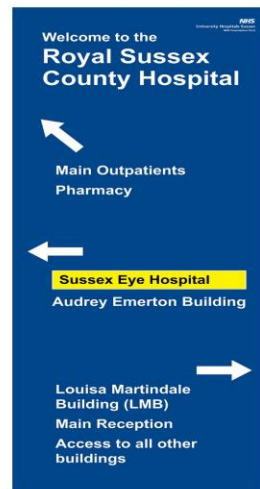
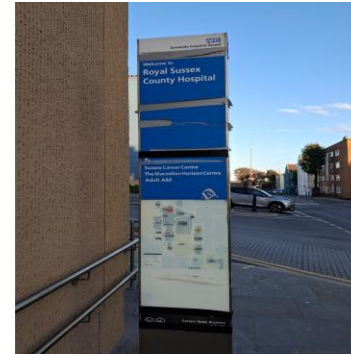
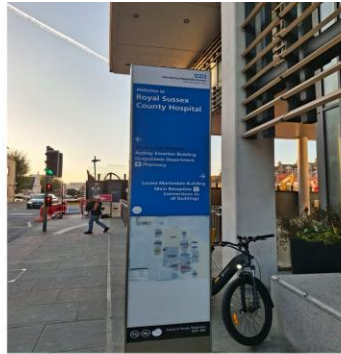


University Hospitals Sussex  
NHS Foundation Trust

# “You Said, We Did”

Terece Walters

“The signage totem on the corner of Eastern Road and Bristol Gate is broken.”  
New Totems ordered



## Main entrance maps now have directions.

### Departments

	Location	Floor	Directions
Accident & Emergency (A&E)	Emergency Department	5	Lift <b>B</b> to Level <b>6</b> • Follow <b>RED</b> Circles • Lift Down to Level <b>5</b>
Children's Accident & Emergency (A&E)	Children's Hospital	6	Lift <b>B</b> to Level <b>6</b> • Follow <b>ORANGE</b> Circles
Urgent Treatment Centre (UTC)	Emergency Department	5	Lift <b>B</b> to Level <b>6</b> • Follow <b>RED</b> Circles • Lift Down to Level <b>5</b>
Acute Medical Unit (AMU)	Thomas Kemp Tower	5	Lift <b>B</b> to Level <b>6</b> • Follow <b>GREEN</b> Circles • Lift Down to Level <b>5</b>
Audiology	Sussex House	G	Cross at <b>Traffic Lights</b> • Turn <b>Right</b> • Turn Left Down <b>Abbey Road</b>
Antenatal Outpatients Clinic	Sussex House	G	Cross at <b>Traffic Lights</b> • Turn <b>Right</b> • Turn Left Down <b>Abbey Road</b>
Blood Tests (Phlebotomy)	Main Outpatients	G	Cross at <b>Traffic Lights</b> • Turn <b>Right</b> • Look for Large <b>Purple</b> Sign
Cardiac Diagnostics	Louisa Martindale Building	2	Lift <b>B</b> to Level <b>2</b>
Cancer Outpatients Department	Sussex Cancer Centre	G	Walk along front of the Louisa Martindale Building • Turn Left up Hill
Cancer Support Centre	Macmillan Horizon Centre	G	Walk along front of the Louisa Martindale Building • Turn Left up Hill
Cancer Treatment Day Unit	Sussex Cancer Centre	G	Walk along front of the Louisa Martindale Building • Turn Left up Hill
Cardiac Catheter Lab	Millennium Wing	7	Lift <b>B</b> to Level <b>6</b> • Follow <b>BLUE</b> Circles • Lift Up to Level <b>7</b>
Claude Nicol Centre	Main Outpatients	G	Cross at <b>Traffic Lights</b> • Turn <b>Right</b> • Look for Large <b>Purple</b> Sign
Clinical Research Facility	Sussex House	G	Cross at <b>Traffic Lights</b> • Turn <b>Right</b> • Turn Left Down <b>Abbey Road</b>
Colposcopy Department	Main Outpatients	G	Cross at <b>Traffic Lights</b> • Turn <b>Right</b> • Look for the Large <b>Purple</b> Sign
Diagnostic Radiology (X-Ray)	Louisa Martindale Building	4	Lift <b>B</b> to Level <b>4</b>
Discharge Lounge	Louisa Martindale Building	1	Follow signs by Lift <b>C</b>
Delivery Suite (Labour Ward)	Thomas Kemp Tower	13	Lift <b>B</b> to Level <b>6</b> • Follow <b>GREEN</b> Circles • Lift Up to Level <b>13</b>
Endoscopy Unit	Millennium Wing	9	Lift <b>B</b> to Level <b>6</b> • Follow <b>BLUE</b> Circles • Lift Up to Level <b>9</b>

### Quick find

Follow the coloured circles on the signs

-  **A&E**  
 4.5 min
-  **Children's Hospital**  
 5 min
-  **Millennium Wing**  
 3.5 min
-  **Thomas Kemp Tower**  
 2.5 min
-  **Main Outpatients**  
 2 min

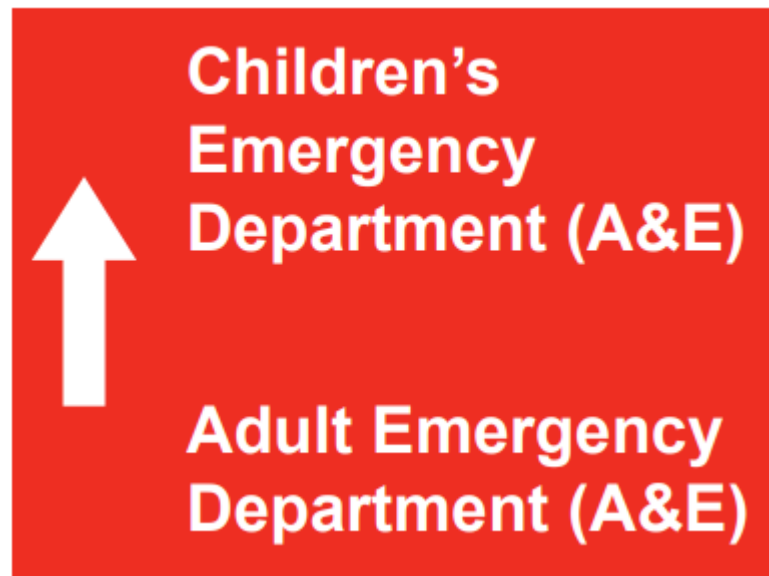
### Quick find icon

-  **Delivery Suite**

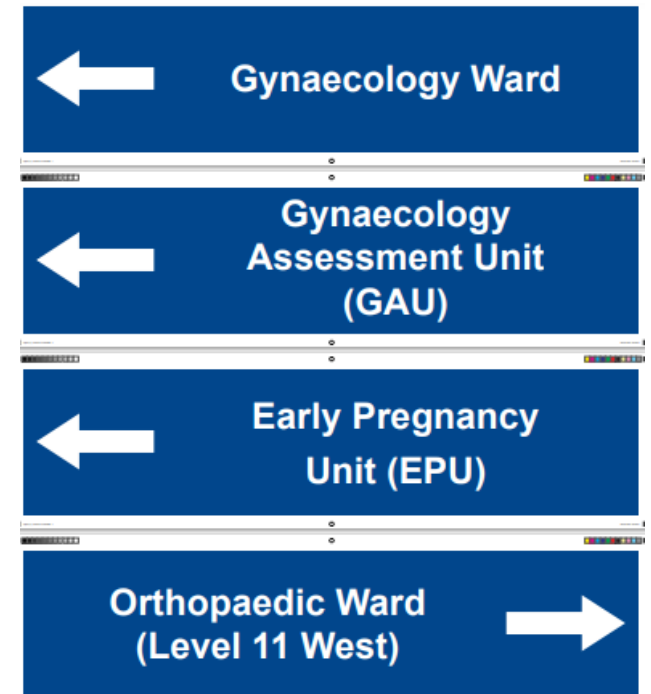
Smoke free button  
signs up



More Children's A&E  
signs to be added to  
Bristol Gate Road



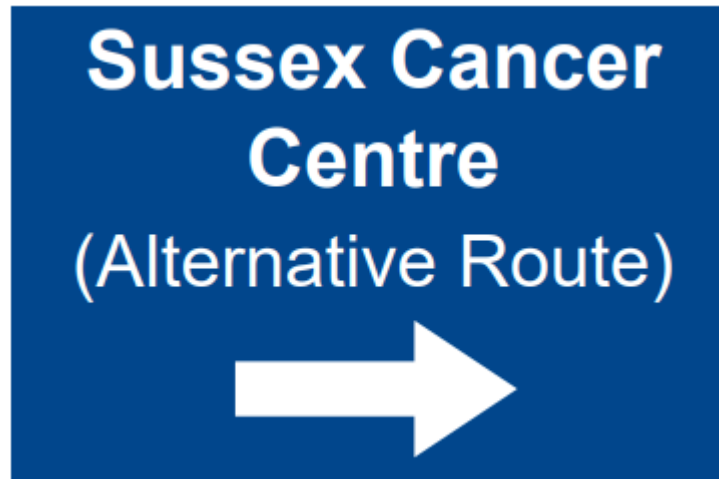
New signs for Ortho  
and Gynae



Alternative entrance signs for Alex



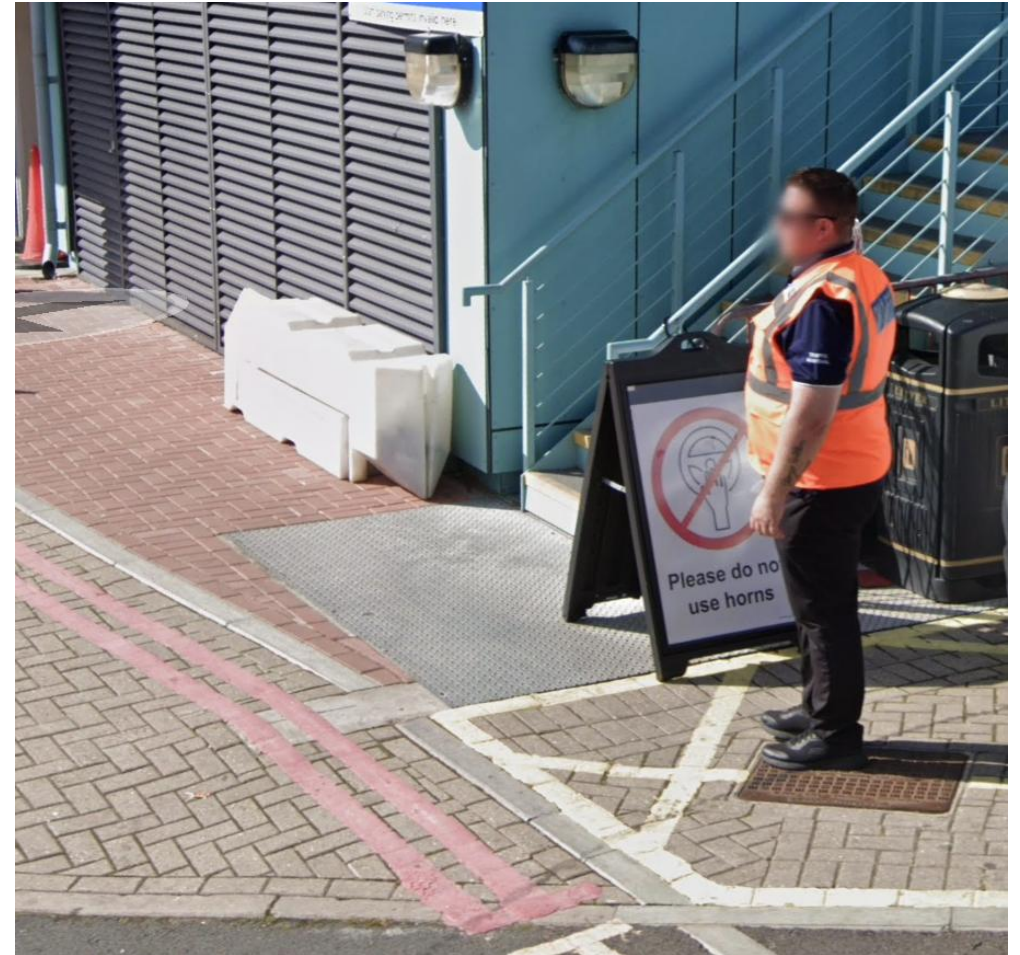
Sussex cancer centre alternative route signs



New UTC and A&E signs



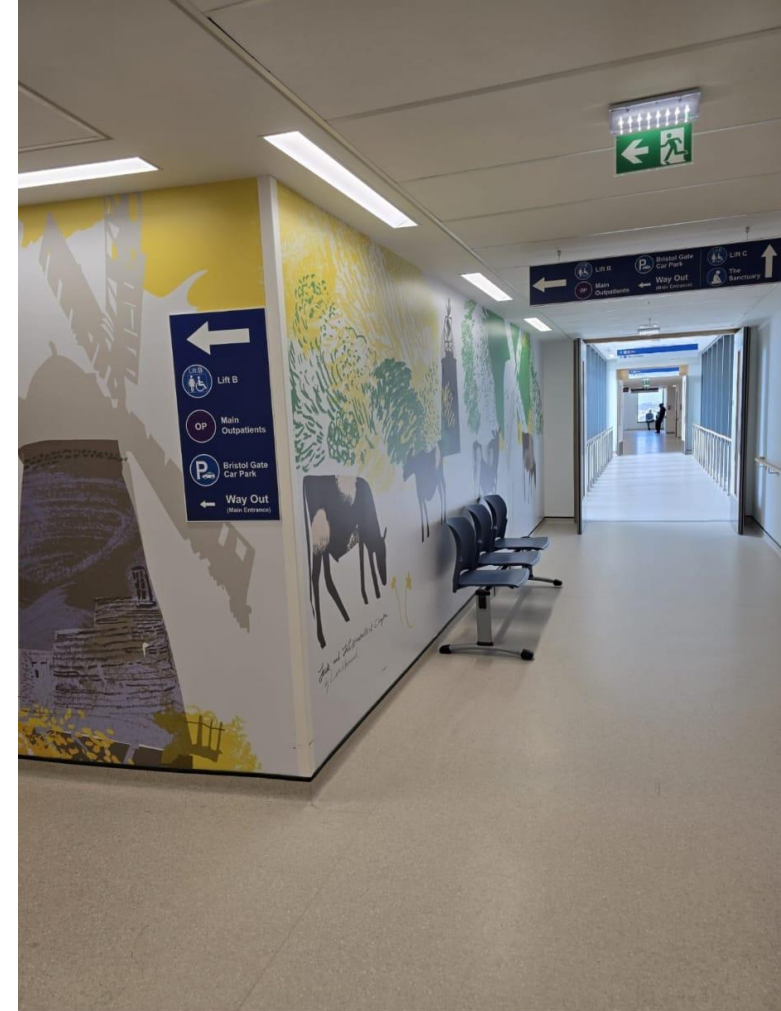
“Do Not Beep Your Horn - A-boards are not currently in place along the North Service Road; only one board appears to be present and not always in place.”



“Further to the new Level 6 corridor seating, can the 3 seats in the Level 3 corridor (under the Royal Alex) be relocated to the Thomas Kemp to LMB link corridor.”

*Further seating has been ordered and is being sponsored by Our Charity.*

*Additional artwork has also been installed along the corridors.*



“Further to previous investigation, there is still a humming noise coming from the catering block.”

*Works has commenced in the Catering Building and we believe the noise has stopped*

*The scaffolding over the previous slide area is being used as a compound to support the works*



“The cymbals in the children’s hospital play area have been reported as noisy.”

*The sensory garden will be undergoing a refurbishment, with additional planting planned to improve the area.*

*It has been confirmed that the instruments are being reviewed and alterations made to help address and reduce the sound that travels from this area*



“Bidford and other delivery lorries are reversing into the South Service Road and idling on Upper Abbey road, before 06:30am”

*The site operations team has been made aware and have formally notified the companies in question.*

*We have commissioned new blue gates to be installed at the Upper Abbey Road exit and Bristol Gate entrance to the South Service Road work expected to commence in early December and be completed by the 16<sup>th</sup>*





University Hospitals Sussex  
NHS Foundation Trust

# Residents Questions on Hospital Operational Matters



University Hospitals Sussex  
NHS Foundation Trust

# Update on construction of the Sussex Cancer Centre

Jonathan Steele

- The overall timescales being worked to are:
  - Enabling works = 2025
  - Main construction = 2026-2028
  - Opening to patients = 2029
- The enabling works are now complete
- Site will become dormant over the winter months
- Dates to follow once final programme is confirmed



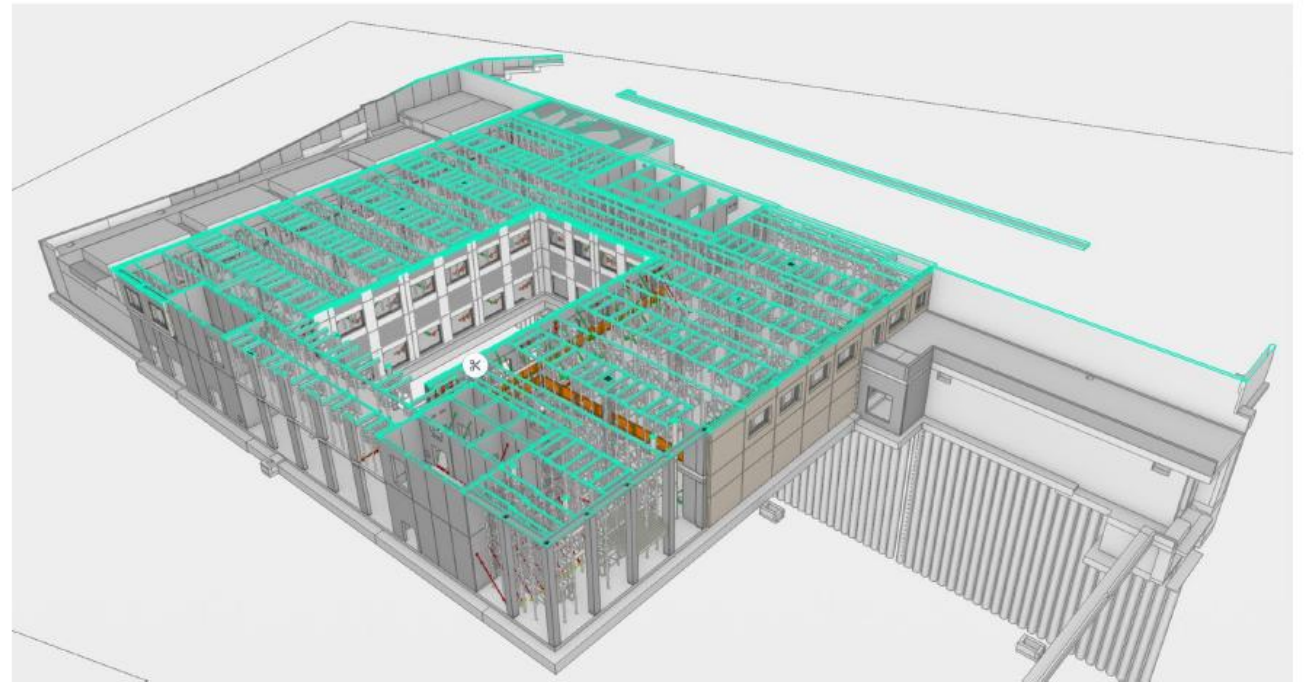
## Modern Methods of Construction (MMC) & Offsite Manufacturing

### What is MMC?

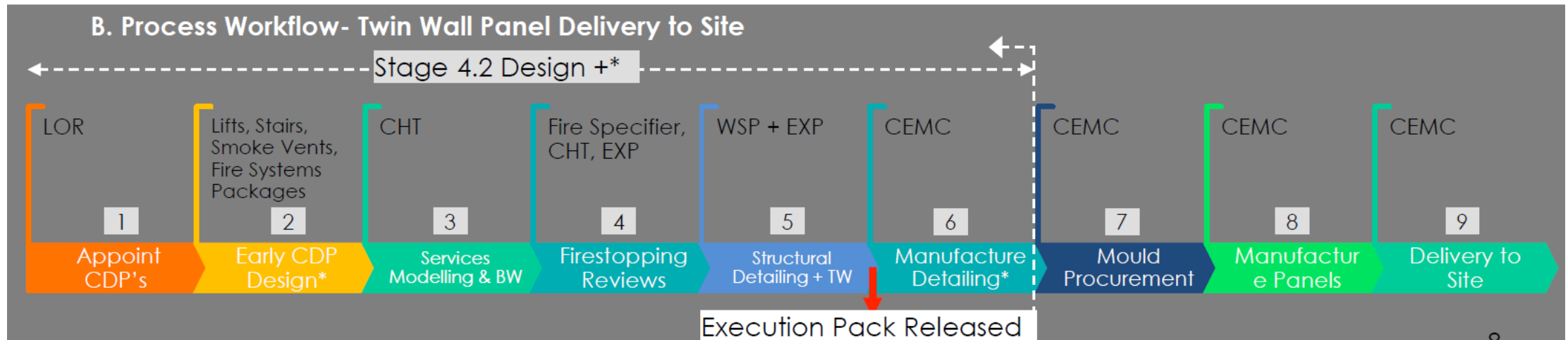
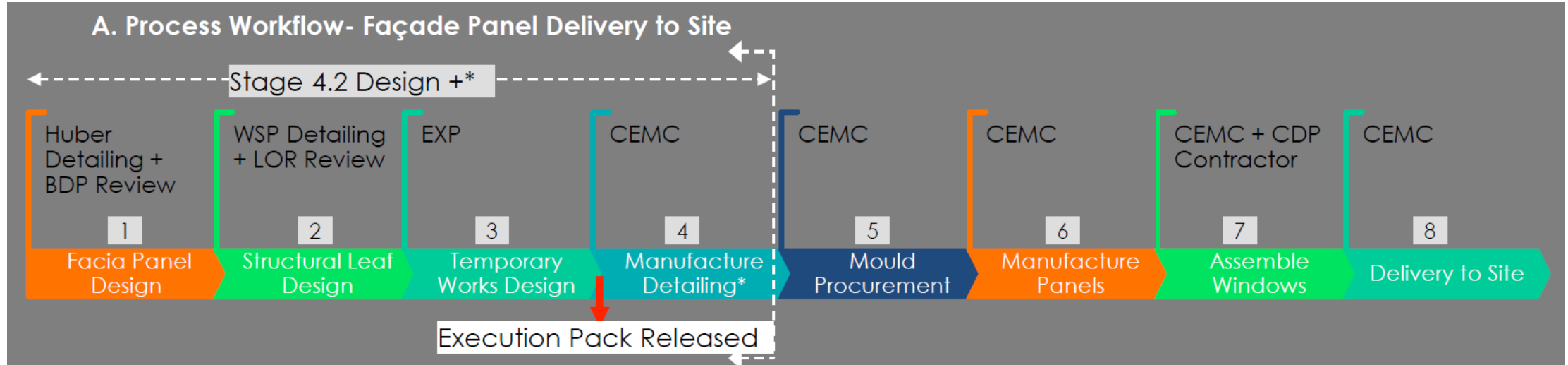
Innovative approach to building that uses factory-based production for components, reducing time and waste on site.

### Why Offsite Manufacturing?

- Speeds up construction by producing elements in controlled environments.
- Improves quality and consistency compared to traditional on-site methods.
- Reduces disruption on site and enhances safety.



Co-ordinated ground floor falsework



## Complex Design & Coordination

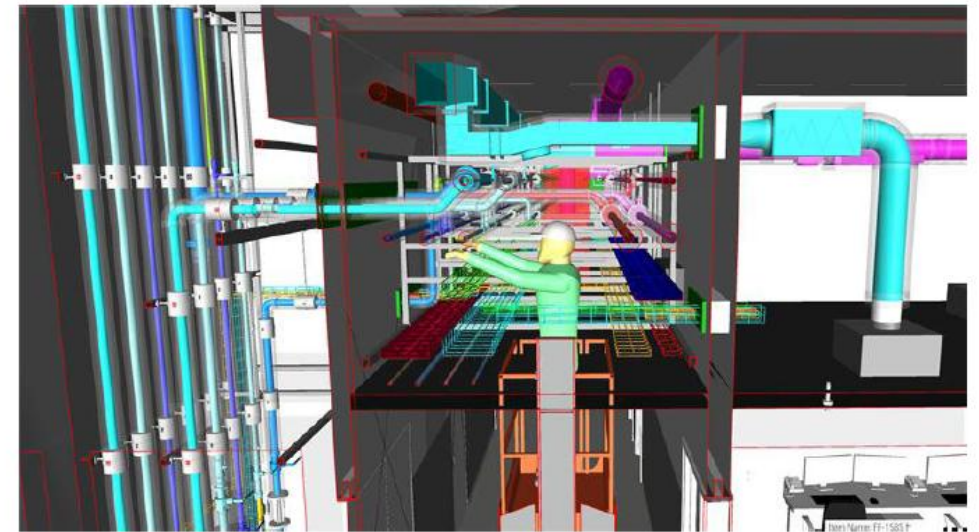
The design will be completely detailed before manufacturing begins.

Architects, engineers, and contractors work together to produce a coordinated design.

Proper sequencing is being planned to avoid delays and rework on site.



Core 1 Mechanical Risers



L01 - Corridor Services Co-ordination



University Hospitals Sussex  
NHS Foundation Trust

# Residents Questions on construction of the Sussex Cancer Centre



University Hospitals Sussex  
NHS Foundation Trust

**Any Other Business**



University Hospitals Sussex  
NHS Foundation Trust

# Thank you for coming

Proposed Date of Next Meeting: Thursday 29th January 2026