



University Hospitals Sussex
NHS Foundation Trust

Hospital Liaison Group

Thursday 29th January 2026

Start: 18:00

Terece Walters

Hospital Nurse Director, RSCH

Jonathan Steele

Interim Associate Director of Strategic Capital

Part One:

18:00	Hospital Director Welcome & Introductions	Terece Walters
18:00	Chair's Opening Remarks	Terece Walters
18:05	Minutes of the Previous Meeting	Terece Walters
18:10	"You Said, We Did"	Terece Walters
18:15	Residents Questions on Part 1	Terece Walters

Part Two:

18:30	Look Forward	Jonathan Steele
18:40	Residents Questions on Part 2	Jonathan Steele
18:55	Any Other Business	Terece Walters
19:00	Date of Next Meeting (26 th March 2026)	Terece Walters



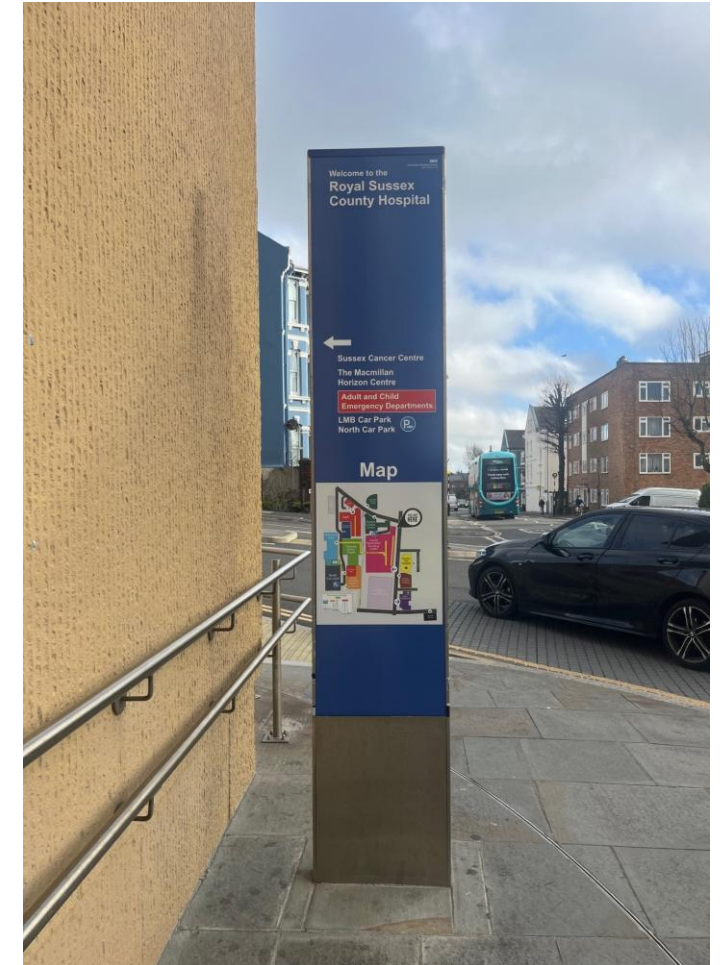
University Hospitals Sussex
NHS Foundation Trust

“You Said, We Did”

Terece Walters

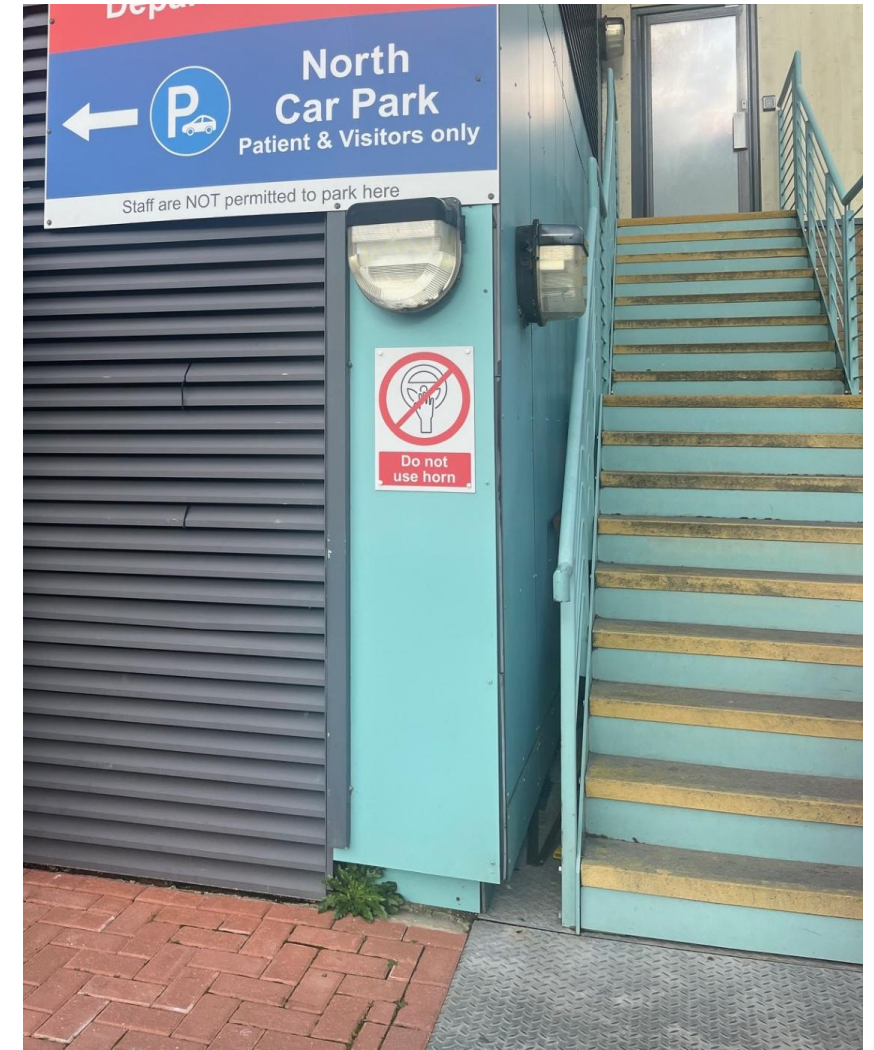
“The signage totem on the corner of Eastern Road and Bristol Gate is broken.”

Totem signage has been replaced



“Do Not Beep Your Horn - A-boards are not currently in place along the North Service Road; only one board appears to be present and not always in place.”

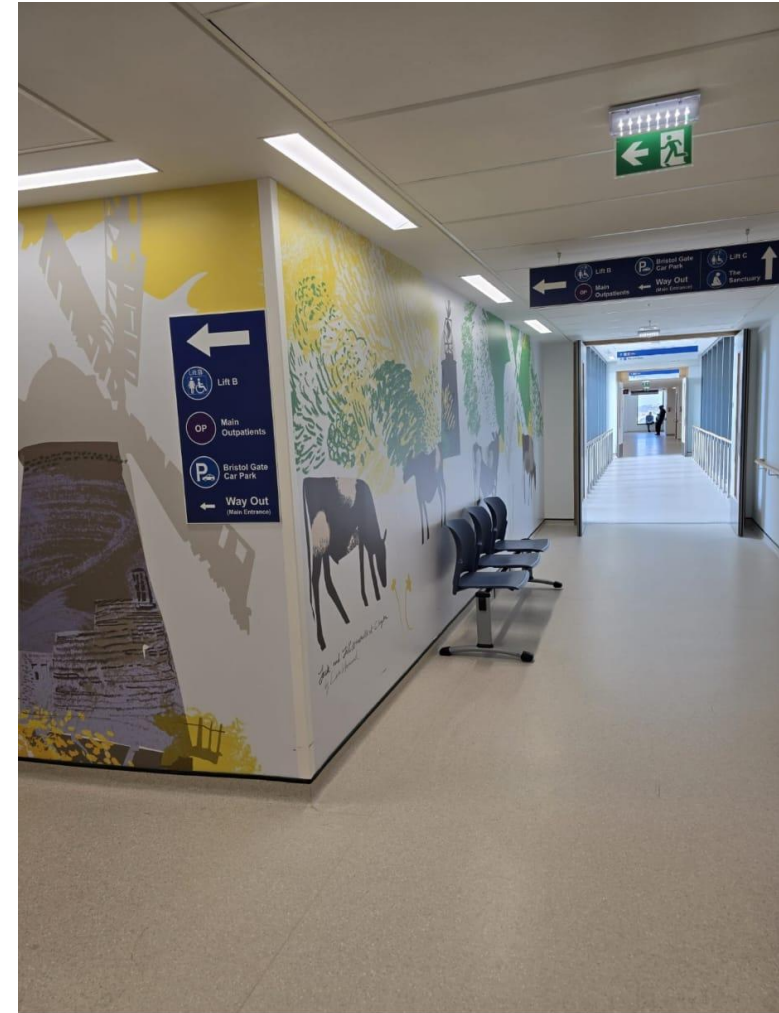
Permanent sign has been installed.



“Further to the new Level 6 corridor seating, can the 3 seats in the Level 3 corridor (under the Royal Alex) be relocated to the Thomas Kemp to LMB link corridor.”

Further seating has been ordered.

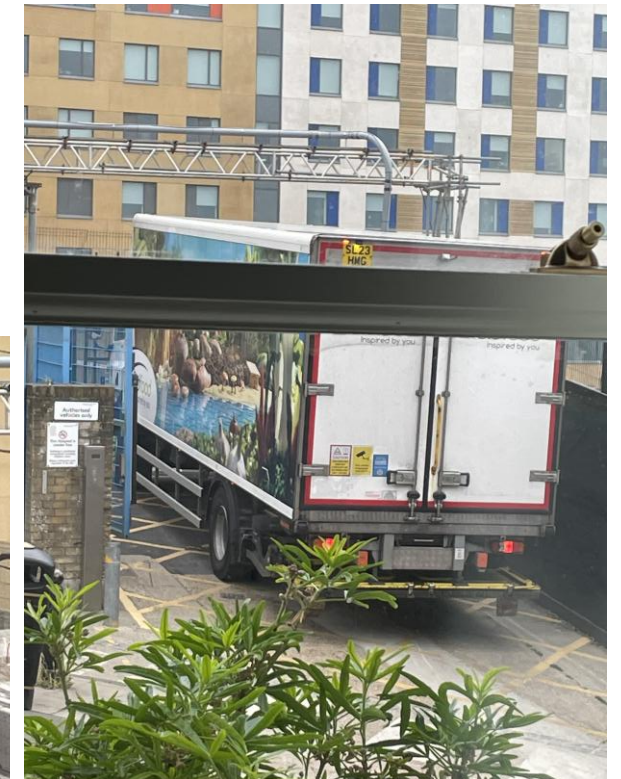
Additional artwork has also been installed along the corridors.



“Bidford and other delivery lorries are reversing into the South Service Road and idling on Upper Abbey road, before 06:30am”

The site operations team has been made aware and have formally notified the companies in question.

The vehicle gate at Upper Abbey Road is in operation. The pedestrian gate has been awaiting installation and commissioning of the intercom and access control, anticipated to be completed by 16th February. Signage due to be delivered and will be displayed



“A bollard at the end of the North Service Road is broken or missing.”

The contractor will be brought back to address this issue as part of upcoming road maintenance.

The road surface near the drains is starting to dip again (previously raised as a concern), so this will also be inspected and repaired.

The team is being proactive because there have been complaints about the uneven surface causing a noise when vehicles pass over it.



“Despite recent improvements in signage, patients arriving early (around 6:45 AM) still struggle to find Theatre Admissions.”

The team agreed to ask colleagues if an early reception cover can be trialled for a period to see if it improves patient experience.

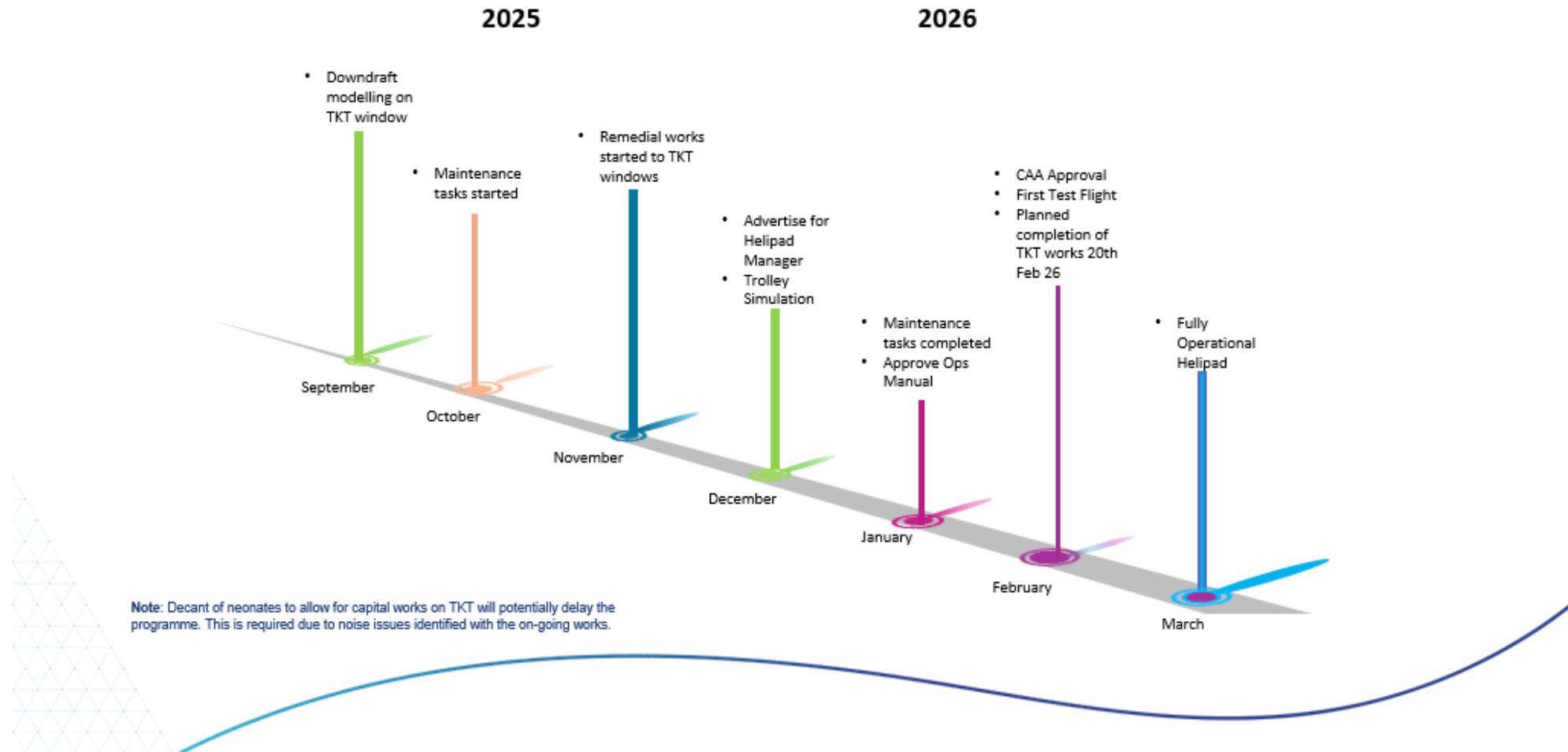




University Hospitals Sussex
NHS Foundation Trust

Helipad Update

Helideck - High Level Programme Plan



Operational readiness:

- The new rooftop helipad at Royal Sussex County Hospital is scheduled to become operational in the next few months
- The minor remedial works (on the windows of the Thomas Kemp Tower) is happening now and expected to be completed in February 2026
- Then test flights and regulatory approvals can take place

Strengthening major trauma care across Sussex:

- Once in service, the helipad will allow critically ill patients - particularly those experiencing trauma, cardiac arrest, or stroke - to be flown directly to hospital care.
- For patients across Sussex, this will mean faster transfers to hospital and quicker access to the specialist care they need in life-threatening emergencies.
- As the region's designated Major Trauma Centre, Royal Sussex County Hospital already plays a crucial role in treating the most severely injured patients. The addition of the helipad will further strengthen this role, enhance the Sussex Trauma Network and ensure that patients from across the county are brought directly to the hospital for the very best trauma care.





University Hospitals Sussex
NHS Foundation Trust

Residents Questions on Hospital Operational Matters



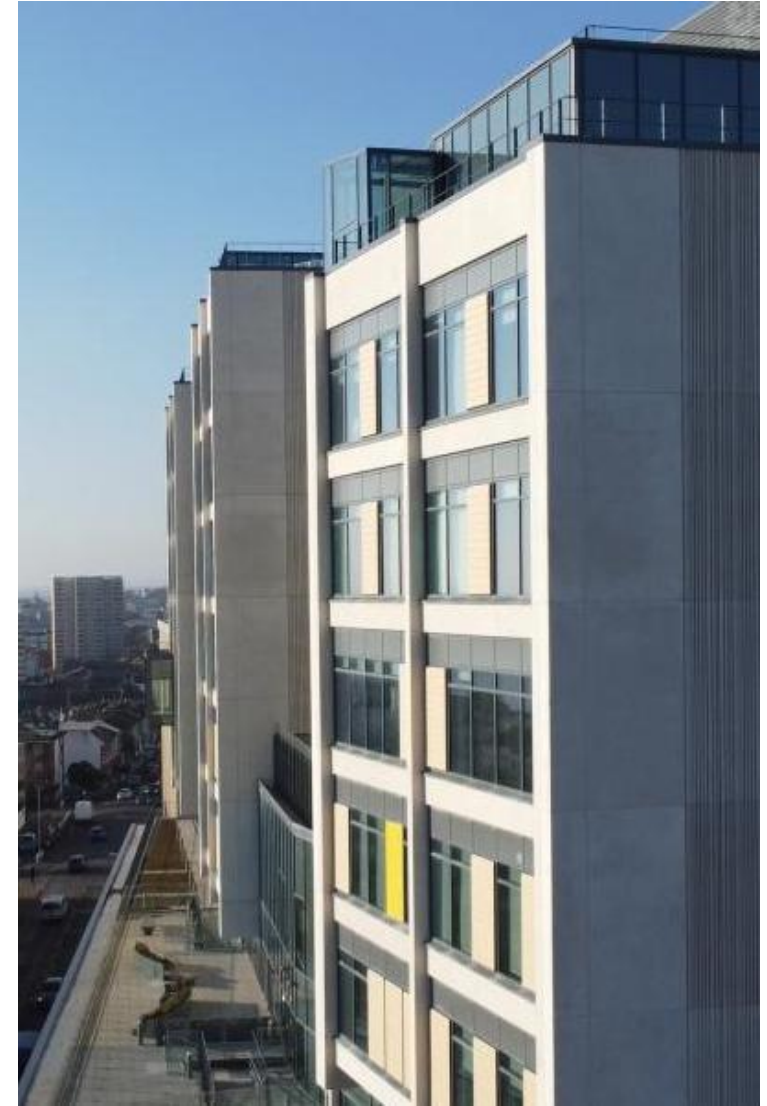
University Hospitals Sussex
NHS Foundation Trust

Update on construction of the Sussex Cancer Centre

Jonathan Steele

- The overall timescales being worked to are:
 - Enabling works = 2025
 - Main construction = 2026-2028
 - Opening to patients = 2029
- Offsite manufacture under way
- Remobilising late spring





First site activities



- Large mural of artwork for the public, patients and staff to enjoy with the aim of lifting morale and bring joy
- Work by local artists The Postman
- Commissioned by My Charity
- Help launch the fundraising campaign for the New Cancer Centre
- Separate prints and original pieces will go on sale in an on February 5th and 6th (6pm to 9pm) at the Royal Sussex County Hospital's Heritage Space





University Hospitals Sussex
NHS Foundation Trust

Residents Questions on construction of the Sussex Cancer Centre



University Hospitals Sussex
NHS Foundation Trust

Any Other Business



University Hospitals Sussex
NHS Foundation Trust

Thank you for coming

Proposed Date of Next Meeting: Thursday 26th March 2026